

Auckland Literary Heritage Trail

A guide to literary sites around Auckland

Find out more: phone 09 301 0101 or visit www.aucklandlibraries.govt.nz



“Last, loneliest, exquisite, apart...”
Rudyard Kipling on Auckland, 1891

Welcome to the Auckland Literary Heritage Trail. In this guide we introduce to you a sample of the Auckland landmarks that have inspired many great writers, featuring within the pages of exquisite literary works.

We hope that you enjoy the journey.

Whangaparaoa



37) Army Bay
Janet Frame bought a cottage in Army Bay upon returning to New Zealand in 1972. Despite the idyllic location, the increasing noise from suburban development and summer campers, as well as the deaths of a number of close friends, including Charles Brasch, made for a frustratingly sustained period of writer's block.

Images from the Sir George Grey Special Collections and Footprints.

Image 36 courtesy of Peter McCurdy.

Images 10, 11, 22 courtesy of Robyn Mason.

Visit Heritage Images at www.aucklandlibraries.govt.nz

Waiheke Island



31) Queens Drive, Oneroa
State of Siege by Janet Frame was partially set on Waiheke Island, where the writer spent time living in a holiday cottage on Queens Drive, Oneroa. Filmmaker Vincent Ward adapted this work for his first short film.

Waiuku



32) 5 Queen Street Waiuku
The historic town of Waiuku during the 1860s is the setting for one of Elsie Locke's well known children's novels, *The End of the Harbour*. The novel features locations such as the Kentish Hotel, a building that is still identifiable today.

Wenderholm



33) Wenderholm Beach
Wenderholm, Auckland's first regional park, with its majestic pohutukawa trees and beach, is the principal setting for Ian Mune's award-winning film, *The End of the Golden Weather*, based on Bruce Mason's play.

West Auckland/Hikurangi



34) Waitakere Ranges/Te Wao nui a Tiriwa – the Great Forest of Tiriwa, Te Henga and Muriwai beaches
The landscapes of the Waitakere Ranges and the beaches of the West Coast have inspired many writers and poets as well as being regular settings

for the popular television series *Xena: Warrior Princess* and *Hercules*. The ranges are the remnants of an ancient volcano and are the ancestral home to the Te Kawerau a Maki people.

West Coast



35) Muriwai Beach
Riemke Ensing's beautiful poem 'Muriwai' captures both the isolation of the beach and sense of possibility living on the edge of the world: "The stories of lives in a piece of flotsam/A gannet's quill to write midwinter rain".

Weymouth



36) Manukau Harbour
Author, essayist and short story writer Roderick Finlayson lived beside the Manukau Harbour in Weymouth for most of his adult life. He was renowned for the prophetic and compassionate representation of Maori voices within his stories.



Facebook – Auckland Libraries
Twitter - @Auckland_Libs

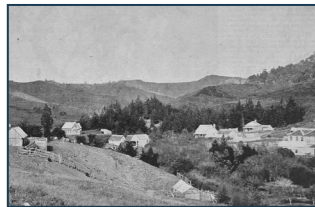


Pt Chevalier



25) Meola reef
Keith Sinclair, the inspiration and mentor for a generation of New Zealand historians, was also an accomplished poet. His 'Ballad of Meola Reef' recalls his boyhood adventures in the 1920s and 1930s.

Puhoi



26) The Puhoi Pub
The Bohemian settlement of Puhoi, including the colonial-style Puhoi Pub & Hotel building, was used as a setting for Michael Firth's film, *Sylvia*, based on the internationally recognized educationalist Sylvia Ashton Warner's autobiography, *Spinster*.

Rodney

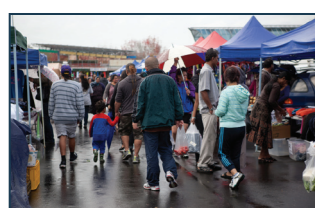


27) Helensville
The Edwardian architecture in the charming village of Helensville provided the perfect film set for Jane Campion's *An Angel at My Table*, the autobiography of author Janet Frame, as well as Michael Hurst's film, *Jubilee*.



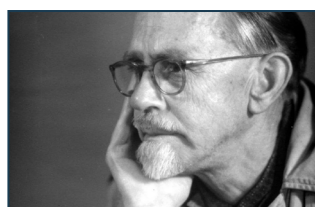
28) Tomarata
Described as a work of literary archaeology, Kendrick Smithyman's poem, 'Tomarata', captures the thoughts of a subtle and inquisitive mind exploring this beautiful and remote part of Auckland.

South Auckland



29) Otago Markets
NZ's bestselling poet, Glenn Colquhoun, was born in Papakura and his poem *Bred in South Auckland* captures the diversity of this vibrant part of our city including this bustling market.

Takapuna

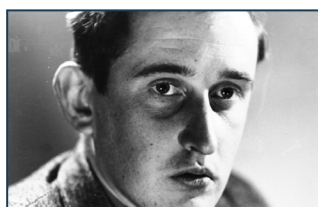


30) Frank Sargeson's house, Esmonde Road
Frank Sargeson was an acclaimed short story writer and a pioneer in capturing an authentic Kiwi voice in literature. He was also a renowned mentor to other authors such as Janet Frame.

Auckland Central



1) Central City Library
Former staff member Robert Sullivan's poem *Kawa Reo* is engraved on the front steps of the library and is part of the street art in Lorne Street. Also, the totara tree and plaque commemorates RAK Mason, regarded as the first poet to use an authentic New Zealand voice in his work.



2) Newman Hall
James K Baxter's acerbic *Ode to Auckland* was published in the last year of his life and references many of the places he frequented, including the then University Catholic hostel and chaplaincy, Newman Hall.



3) Sir George Grey Special Collections: Ta Hori Kerei - Nga kohinga taonga whakahirahira
This collection contains the jewels of Auckland's literary heritage and is the subject of a beautiful, thoughtful sequence in Robert Sullivan's *Jazz Waiata*.



4) 34 Kitchener Street
Ron Holloway and Rob Lowry's Unicorn Press, latterly the Holloway Press, has been intimately connected with the Auckland literary scene since the 1930s. Examples of works printed on this press come from the likes of Allen Curnow, RAK Mason, Maurice Duggan, Robin Hyde and Frank Sargeson. While the press is now located at the Tamaki campus of the University of Auckland, the original building in Kitchener Street is now a car park.

Devonport

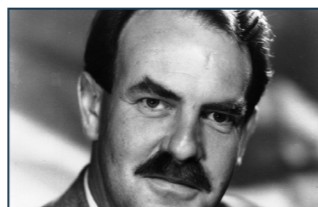


5) Cheltenham Beach
Hector Bolitho was a prolific novelist and royal biographer who spent most of his childhood and early adult years in Devonport. "The beauty of Cheltenham in the summer is not a thing for words but of silent, inner emotions..."



6) Lover's Cove, North Head
Isabel Maude Peacock, an author well known for her children's novels, was born in Devonport in 1881 and spent the first 20 years of her life in the Devonport area. "Sometimes would pass an infrequent liner going 'Home', as the grown-ups told us" (*When I Was Seven*).

Forrest Hill



7) Forrest Hill Road
Part of the North Shore literary circle, Maurice Duggan was one of New Zealand's most accomplished short story writers. He lived near the Crown Hill Reservoir for most of his life.

Glendowie



8) Sacred Heart School
Academic publisher, Dan Davin, of Oxford University Press, dedicated 30 years to tirelessly promoting New Zealand literature in Britain. As a diligent student on a scholarship at Sacred Heart College in 1930, Dan established friendships that lasted all his life.

Hauraki Gulf



9) Browns Island / Motukorea
Browns Island was named after William Brown, a writer and publisher of the *Southern Cross*, one of the earliest Auckland newspapers. This newspaper was incorporated into the *New Zealand Herald* in 1876.

Henderson



10) Swan's Arch, Central Park Drive
Maurice Shadbolt, a writer recognised for his storytelling talent, frequently used New Zealand history as inspiration for his fiction. His novella *Dove on the Waters* was partly inspired by Henry Swan (nicknamed 'Henderson's Hermit') the creator of Swan's Arch.



11) Central township and the Falls Hotel
One of New Zealand's most distinguished novelists, Maurice Gee, spent most of his childhood in Henderson, a key source of inspiration in many of his novels. An example of this is seen in his work, *The Fat Man*, where the main character lives at the Falls Hotel.

Howick



12) Polish Heritage Trust Museum
Award winning author and Howick resident Jennifer Beck has the original artwork from *Stefania's Dancing Slippers* displayed in this museum, located on Elliot Street.

Karekare

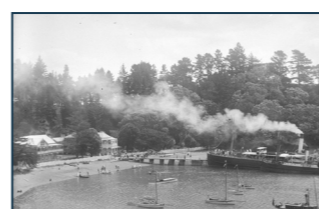


13) Karekare Beach
C. K. Stead, distinguished novelist, essayist, literary critic and poet, owned a holiday house at Karekare. The nearby beach and bush are the inspiration for many of his poems.



14) Winchelsea House
Winchelsea House has long been the home of bookseller, children's author and groundbreaking children's literacy researcher, Dorothy Butler.

Kawau Island



15) Mansion House
Mansion House was not only the retirement residence of Sir George Grey, but also where many of his ethnographic works were completed. Grey's gift of his personal library to the people of Auckland created a publicly available heritage collection of international significance.

Mangere



16) Mangere Mountain
Message from Mangere is one of a number of poems referencing poet and librarian Robert Sullivan's life in Auckland: "from the mountain top you feel like God/looking on the galaxy that is Mangere..."

Manukau



17) Manukau Mall
David Eggleton's *Manukau Mall Walk* vividly describes Auckland, his "jet-lag city" starting from Great South Road and heading towards the CBD.

Maungawhau / Mt Eden



18) Ipu Pakore – near Water Street, Mt Eden
This was the water source for the rich Maungawhau Pa and is the setting for one of Auckland's classic love stories. Puhihuia, the daughter of a Maungawhau chief, elopes with Ponga, a visiting chief's son from Awhitu. In the story, Puhihuia then defeats an all-female war party sent after her in one-on-one combat. This beautiful story has inspired several literary versions since Victorian times.

Milford



19) Milford Reserve
Performance poet and troubadour Sam Hunt was born in Castor Bay and grew up in Milford near Wairau Creek. The influence of this once idyllic setting appears in a number of his poems.

Mt Roskill



20) Dominion Road
Immortalised by the eponymous 1993 Muttonbirds song, Dominion Road is a major public transport artery in Auckland. The lyrics of singer and songwriter, Don McGlashan, have been referenced in a number of novels and inspired the title of Ian Rebus' novel, *The Falls*.

New Lynn



21) Ambrico Kiln (Gardner down-draught kiln), Ambrico Place, New Lynn
Maurice Gee's novel, *Going West*, vividly describes the once extensive brickworks of New Lynn, home of the iconic New Zealand crockery supplier, Crown Lynn. Ambrico Kiln is one of the few remnants of this brick and pottery empire.

North Shore



22) Waitemata Harbour and Takapuna Beach
Auckland's Waitemata Harbour and Takapuna Beach feature prominently in C.K Stead's novel *All Visitors Ashore*. Susan Graham in the *New Zealand Herald* described the novel as

"Auckland... as never before in poetry or prose...irrepressible youth, irrepressible brain, irrepressible randiness... enormously nostalgic."

Northcote



23) Awataha Marae
Hone Tuwhare was a resident of Beachhaven for 30 years and witnessed the sad events of the disinterment of urupa at Awataha Marae in 1942: "Hurry rain and trail him, to the bottom of the grave" (from 'Burial').

Piha



24) Piha Beach
Kevin Ireland, one of New Zealand's best loved poets, captured the essence of this beach in his poem *Summer Evening: Piha*: "Day's violence continues/Eternally the fragile surf, is shattered on this iron beach."