

# Waimate's Historic Walk

## 19. **Criterion Hotel**

Formerly the residence and surgery of Dr A G Pitts. Has been a hotel since 1957.

## 20. **Memorial Gates & Victoria Park**

The Memorial Gates are in memory of 149 men and women who died in WW1. Victoria Park is 7.2 ha. containing Botanic Gardens, aviary and wallaby enclosure, camping and sports facilities.

## 21. **Hunters Hills Lodge**

Waimate Hospital built 1879. In operation for 117 years, and closed in 1996. Hunters Hills Lodge was the Nurses Home, and was built in 1921.

## 22. **Queen Street—Oak Avenue Memorial**

Commemorates the meeting between Maori Chief Te Huruhuru and Michael Studholme in 1854.

## 23. **Norman Kirk Memorial Swimming Pool**

Opened by John Kirk MP in 1978, in memory of Prime Minister Norman Kirk, who was born in Waimate, and died in office. He is buried in the Waimate Cemetery along with his wife.

***An information board erected in 2012 by Pro-Ject Waimate acknowledges the life and works of Norman Kirk. This is situated along Queen Street to right of pool entrance.***

## 24. **William Boland Park**

Commemorates the service of a Mayor of Waimate.

## 25. **Centennial Fountain— since dismantled**

## 26. **Salvation Army Citadel**

Opened in 1973 by the Rt. Hon. Norman Kirk.

## 27. **Seddon Square**

Named after Prime Minister Richard Seddon. Maori House carvings were executed by the Arawa Tribe of Rotorua. The Band rotunda was built in 1911.

## 28. **Local Government Centre and Library**

Opened in 1982. Replaces previous Council Buildings.

## 29. **Clock Tower**

1939-1945. Memorial to 91 men. Houses clock and bells belonging to the people of Waimate since 1911.

## 30. **Bushman Statue**

Erected in 2006 to commemorate Waimate's historic timber industry.

## 31. **St Augustine's Anglican Church**

Built in 1872. Lynch Gate, unusual for New Zealand, built 1902. Has two windows manufactured by Morris & Co. unique in NZ.

## 32. **Zealandia Monument**

Commemoration of the South African War (Boer War) 1899-1902.

## 33. **Empire Hotel (Plaque)**

Known as 'the cyclists hotel' during the first half of the century.

## 34. **Kia Ora Buildings (next to BNZ)**

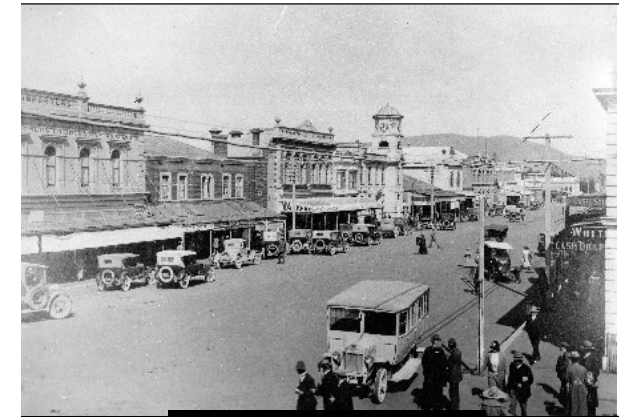
Used by the Waimate Advertiser between approx. 1909-1930.

## 35. **62 Queen Street (Plaque)**

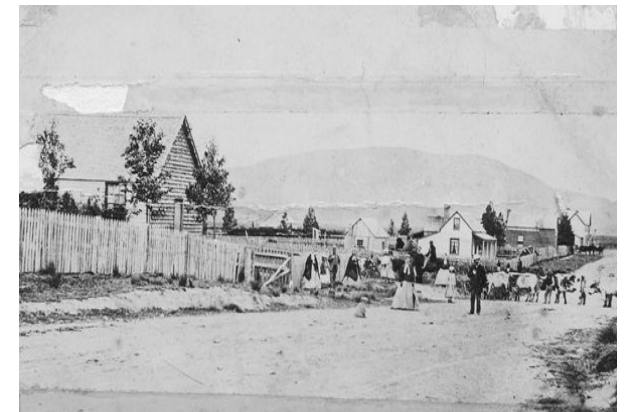
The original wooden building started as Hayes Horse Bazaar before being replaced by this building in 1914. The building has been home to a range of businesses including a garage, and National Bank.

## 36. **Coronation House (Plaque)**

Built in 1901 to celebrate the coronation of King Edward VII. Constructed for Arthur Jones & Co. who operated a millinery business from this building until about 1920.



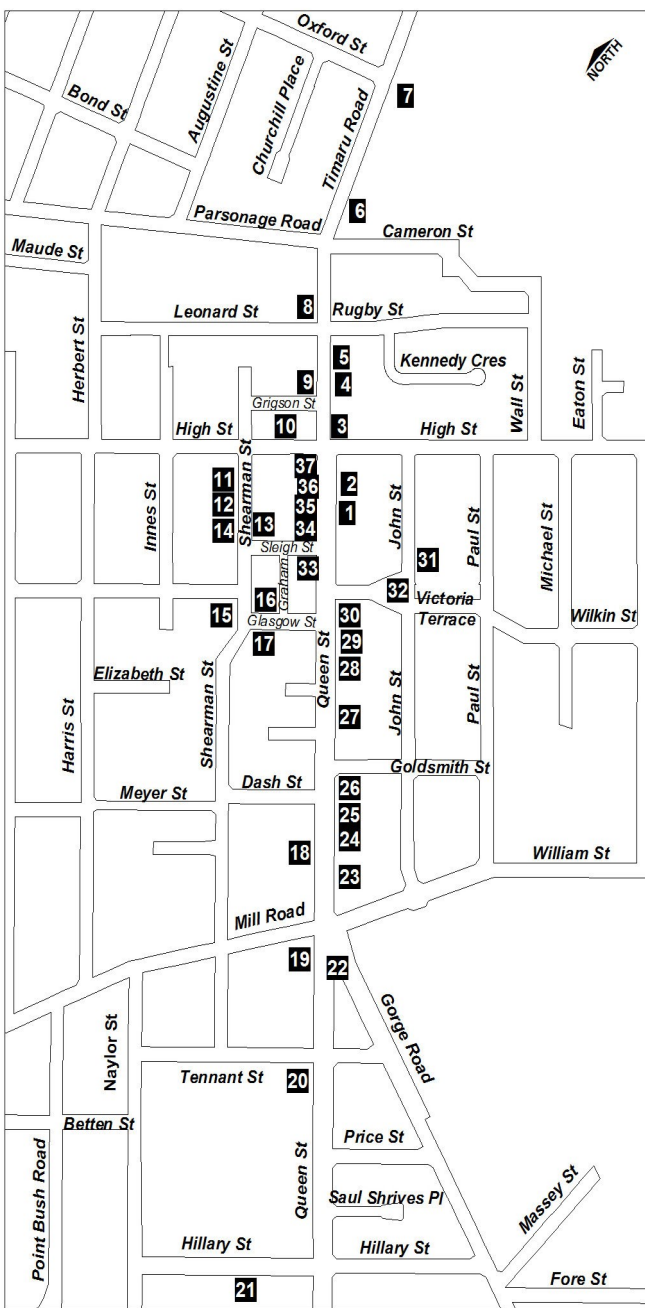
*Queen Street 1920's*



*Queen Street 1865*

Compiled by:  
**Waimate Information Centre**  
@ The Event Centre, 15 Paul Street  
Phone (03) 689 7771  
Fax (03) 689 7791  
Email: [info@waimatedc.govt.nz](mailto:info@waimatedc.govt.nz)  
[www.waimate.org.nz](http://www.waimate.org.nz)

# Historic Walk Map



**1. Old Post Office Building (Plaque)**

Opened 1911. Third one to be built. The first built in 1870, was moved and is now a home in Mill Rd.

**2. Savoy Building (Plaque)**

Built in 1870, this is thought to be the first brick building in Queen Street.

**3. Waimate Hotel (Plaque)**

The oldest hotel in Waimate in terms of licence. Built in 1902 after previous two burnt down.

**4. Victoria House**

Built for Mr W McDonald in 1877. Used as a bakery until 1880, when it became a drapery.

**5. Fritz Cycle Works**

Established in Waimate 1898, by Mr J Richards. Faint advertising is still visible on left side of the building opposite. It was painted over at the start of World War I as the word 'Fritz' was outlawed.

**6. St Patricks Catholic Church**

Built 1908 and opened in 1909. The rose window measures 14ft in diameter, and the three bells in the tower were cast in Belgium.

**7. Blue Stone House**

Built mid 1860's, it is the oldest residence still occupied in the Waimate District. The first recorded Roman Catholic Mass was celebrated here in 1865, with eleven people present.

**8. Colourplus (Plaque)**

Built in 1909, this premise has been operating as a retail paint shop continuously since it was built. It is the oldest in New Zealand to do so.

**9. Grigson Corner (Plaque)**

Built circa 1900-1910 this building is named after Mrs Grigson who was the first woman in Waimate to own a business.

**10. Arcadia Theatre**

Built 1906, approximately 296,970 bricks of varying design went into its construction. Category II with Historic Places Trust. Pro-Ject Waimate is currently working to restore the building.

**11. Old Police Station**

Built and opened in 1940 after the previous one was badly damaged by fire in 1939.

**12. Waimate Museum (Plaque)**

Formerly the Old court House for over 100 years. Built in 1879 to a Neo-Classical style.

**13. Regent Theatre**

Built 1956. First opened by Kerridge Odeon. Now used for theatre productions, movies, festivals and variety shows etc.

**14. Royal Tavern (Plaque)**

Built in 1875. In later years the hotel grew to be one of the most commodious and comfortable hoteliers of the day.

**15. Knox Presbyterian Church**

Built 1934. Second Presbyterian Church to be built. Most of the stone came from the Waihao river bed. Two windows from the old church are preserved in the bell tower.

**16. Senior Citizens Centre (Plaque)**

Built 1880. Originally the Waimate Fire Station.

**17. St Pauls Methodist Church & Hall**

Built 1887. Previous church and hall were in Queen St, but were destroyed by fire in 1886.

**18. Silos (Plaque)**

Opened 1921, the concrete was not cured properly, so remained unused for 45 years, becoming utilised in 1967. They hold approx. 3,200 tons. "Empress Roller Flour Mill" was established in 1890.

## **Waimate**

“Waimate” is a shortened version of “Te Waimatamate” meaning “slow moving waters”, and was a Maori settlement until 1854, when the local chief, Te Huruhuru, met with Michael Studholme and agreed to land ownership for Europeans.

Waimate quickly grew to be a self-sufficient town, supporting seven sawmills at the time of the 1878 bush fire.

Waimate has been the home of many famous New Zealanders, including Doctor Margaret Cruickshank who was the first woman to practice medicine in New Zealand, also the Mr Norman Kirk who was Prime Minister of New Zealand between 1972 and 1974, and buried in the Waimate Cemetery.

### ***ACKNOWLEDGEMENTS***

***The Waimate Historical Society and  
The Public of Waimate.***

## **Waimate**

“Waimate” is a shortened version of “Te Waimatamate” meaning “slow moving waters”, and was a Maori settlement until 1854, when the local chief, Te Huruhuru, met with Michael Studholme and agreed to land ownership for Europeans.

Waimate quickly grew to be a self-sufficient town, supporting seven sawmills at the time of the 1878 bush fire.

Waimate has been the home of many famous New Zealanders, including Doctor Margaret Cruickshank who was the first woman to practice medicine in New Zealand, also the Mr Norman Kirk who was Prime Minister of New Zealand between 1972 and 1974, and buried in the Waimate Cemetery.

### ***ACKNOWLEDGEMENTS***

***The Waimate Historical Society and  
The Public of Waimate.***

## **Waimate**

“Waimate” is a shortened version of “Te Waimatamate” meaning “slow moving waters”, and was a Maori settlement until 1854, when the local chief, Te Huruhuru, met with Michael Studholme and agreed to land ownership for Europeans.

Waimate quickly grew to be a self-sufficient town, supporting seven sawmills at the time of the 1878 bush fire.

Waimate has been the home of many famous New Zealanders, including Doctor Margaret Cruickshank who was the first woman to practice medicine in New Zealand, also the Mr Norman Kirk who was Prime Minister of New Zealand between 1972 and 1974, and buried in the Waimate Cemetery.

### ***ACKNOWLEDGEMENTS***

***The Waimate Historical Society and  
The Public of Waimate.***