

# Tracks on Motuihe

The Motuihe road is sealed between the Wharf Shed and the Cemetery and not sealed elsewhere. The walking tracks are mown grass except for the bush component of the Tieke track which is formed and metalled. The tracks are an easy gradient and provide access to a range of diverse and interesting bush, beaches, and destinations. Unmarked tracks are generally no exit and provide access for tree planting, weed control, bird and reptile monitoring.

The walking tracks are marked with directions on track intersection bollards showing distances and walking times to various locations. The walking times shown on the bollards assume a leisurely pace with stops.

## Tieke Track - 1.5 - 2.5hr, 5km return from the wharf

Tieke Track is in the middle of the island and is accessed from the wharf and also beaches around the island via the marked tracks. The walk starts through trees planted in 2003 and passes under ancient native trees which are home to a wide variety of birds including the very rare tieke. There is a seat overlooking Wharf Bay, and a geologically significant pancake limestone formation can be viewed. Many rare and endangered birds introduced since 2005 can be seen and heard on the walk, often feeding on nectar, berries and seeds. The track emerges from the bush near the ridgeline and there is an option to head south to Nga Taikorapa or north to head towards the wharf or other beaches.



Tieke (Saddleback)

## Eastern Beaches Track - 1.5 - 2.5hr, 5.5km return from the wharf

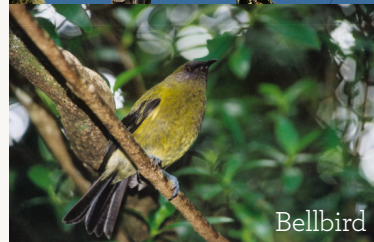
This loop walk is generally an easy gradient on a grass track, with outstanding views of the Hauraki Gulf, beaches and regenerating bush. The track includes access to Ocean Beach, Snapper Bay, Calypso Bay and views over Ohinerau Bay. There are some marked Link tracks off this track which provide quicker routes to other destinations. Depending on wind direction it is always possible to find a sheltered beach for a picnic.



Kereru (NZ Pigeon)

## Bald Knob Track - 2 - 3hr, 6.5km return to the wharf

The Bald Knob Track takes visitors to the southern end of the island where there is a secluded sandy beach. The track follows the ridgeline providing 360 degree views of Hauraki Gulf and at Bald Knob views looking over Wharf Bay to Rangitoto. The grass track is through regenerating bush and pasture.



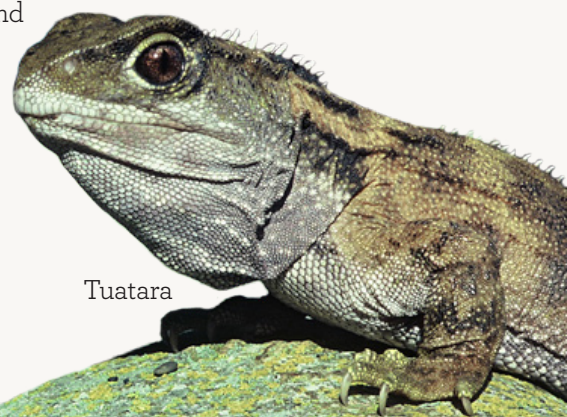
Bellbird

## Headland Heritage Walk to Cemetery - 20 - 45 min, 1km return

The walk is on a sealed road up the tree lined slope past the toilets towards the Cemetery which is at the most northern point of the island. The road passes historic olives planted in the 1860s and takes in 360 views of Waitemata Harbour Hauraki Gulf Islands, and ends at the 1918 Spanish Flu graveyard.

## Link Tracks

The marked link tracks provide shortcuts to and from various destinations



Tuatara

# Motuihe

(Te Motu-a-Ihenga)



0 100 200 300 400m



- Information
- Toilets
- Camping
- Lookout
- Wildlife
- Road
- Link Track
- Eastern Beaches Track (5.5 km return to wharf)
- Tieke Bush Track (5 km return to wharf)
- Bald Knob Track (6.5 km return to wharf)

Photo: Biospatial Ltd

Nga-Tai-Korapa (The place of the Tide Rip/cross current)

- Toilets are near the track to the wharf
- Please take all your rubbish with you
- Overnight camping in designated areas only
- Be aware of ferry departure times
- Only gas fuelled BBQs allowed

- For safety and to protect the environment, stay on marked tracks.
- Beware of cliff edges - danger of falling. Take care and supervise children
- Historic structures may be unstable and pose a hazard - stay well clear
- Dogs are not permitted on the island and beaches
- Total fire ban
- No dirty shoes / equipment
- No ants, skinks, mice
- No seeds
- No unsealed bags of food

**Motuihe Ranger**  
0274 372 576  
**Motuihe Trust**  
0800 66 88 44

**DOC HOTline**  
**0800 362 468**  
Report any safety hazards or conservation emergencies  
For Fire and Search and Rescue Call 111



**Protect plants and animals**  
Keep to the track  
Camp carefully  
Remove rubbish  
Respect our cultural heritage  
Toitu te whenua  
- Leave the land undisturbed